

CL-LED

Sunnex CL-LED is a diffused LED-lamp for general purpose like reading, assembly and inspection on workbenches etc. It has a pattern of LED's with a combined power of 11W, with a built in recessed diffuser, for minimal glare and a flat light pattern. The lamp head is made from extruded aluminium with end pieces in durable plastic material. The classic Sunnex flexible arm is fitted and it comes in 500 or 700mm length. Supply voltage is 24V AC/DC.

The built in diffuser allows for an even spread of the light and its recessed position gives protection against impact and glare.

Suitable applications are inspection and measurement, office tables and in applications where a greater flat light pattern is preferred.

Our accessories like adapter, C-clamp, wallbracket, magnetic base and table base can be used with this product.

Custom versions available.

Features

- Arm length 500 and 700mm
- LED lifespan >50000h
- 24V AC/DC connection for safety in industrial applications
- Adaptor available for direct connection to mains voltage

Applications

- Workbenches
- Assembly stations
- Inspection
- Laboratories
- Office tables

Benefits

- Low power consumption
- Very low heat emission
- Minimal glare
- Flexible arm for precise adjustment
- Cool white colour temperature and high colour rendering index for good work ergonomics

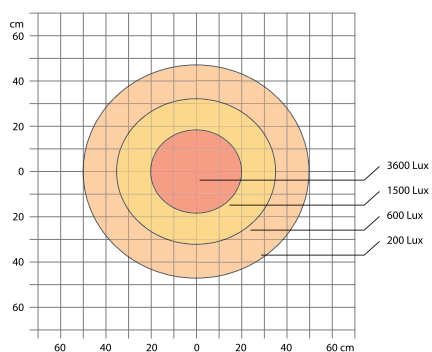




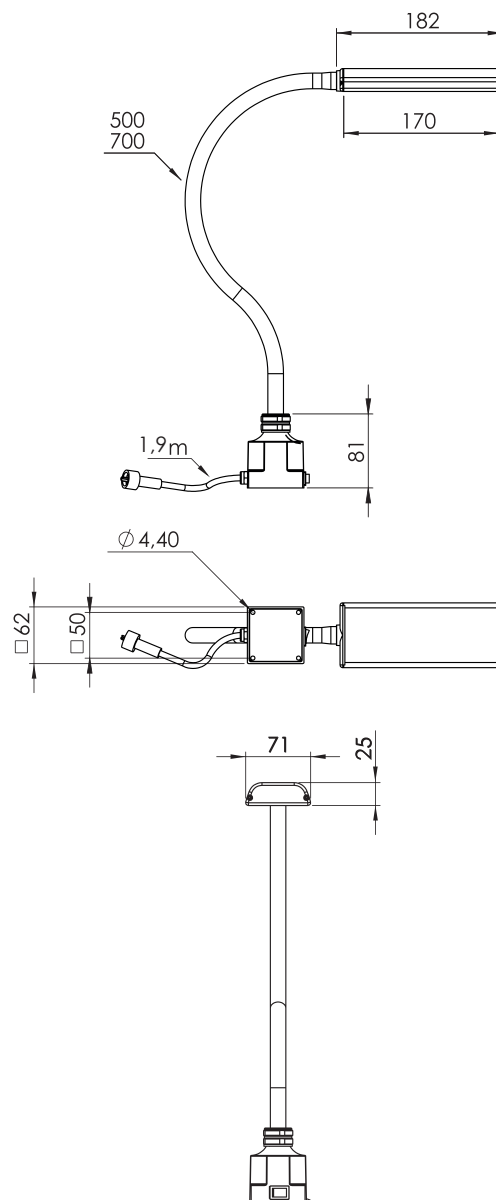
Technical Specifications

Supply voltage	24-36VDC 1,9m cord set (100-240VAC Plugin AC/DC-adaptor available, IP44)
Power consumption	11W
Arm length	500 or 700mm
Colour	Black
Colour temperature	4000k
IP-rating	IP20
Protection Class	III
Light output	1000Lm, 3600Lx at 500mm distance
Colour rendering index	92
Weight	1,2-1,4kg
Technical lifespan	>50000h

CL-LED 11W at 500mm distance



Arm	Connection	Part. no.
500mm	24 - 36V AC/DC	35100
700mm	24 - 36V AC/DC	35120



PSU (100-240V~)



Plug-in Adaptor for Europe 230V
33901

Mounting Accessories



Magnetic base
14000

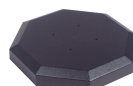


Table base
14015



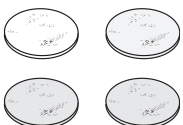
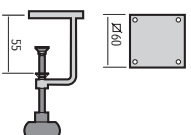
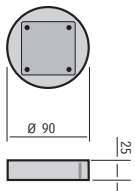
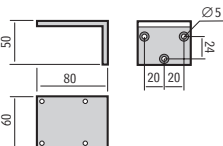
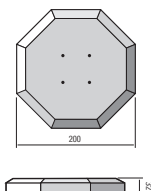
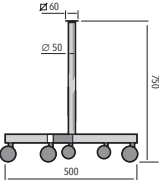
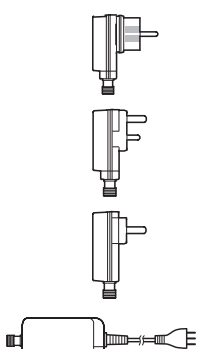
C-Clamp
14020



Wall mount
14030

ACCESSORIES & SPAREPARTS



Accessory		Suitable for	Info	Part. no.
Lens/Glass		CL-LED	Frosted (std)	35005
C-clamp		All with std. base M4 x 20 (4x) included	Max.42mm	14020
Magnetic base		CL-LED/Tellus/Lumius/Pluto/LS M4 x 20 (4x) included	Ø 90mm	14000
Wallmount		All with std. base M4 x 20 (4x) included	50 x 80mm	14030
Desktop base		All with std. base 4.0 x 25 (4x) included	Ø 200mm	14015
Trolley base		All with std. base M4 x 20 (4x) included	Height 750mm	14024
AC/DC-Adapter		Pluto/Tellus/Solus6/Solus9/ Lumius/LS/CL-LED/Luxor (Euro)	100-240V/24VDC Max 15VA, IP44	33901
		Pluto/Tellus/Solus6/Solus9/Lumius/ LS (UK)	100-240V/12VDC Max 12VA, IP44	33902
		Pluto/Tellus/Solus6/Solus9/Lumius/ LS (US)	100-240V/12VDC Max 12VA, IP44	33906
		Pluto/Tellus/Solus6/Solus9/Lumius/ LS/CL-LED/Luxor (CH)	100-240V/24VDC Max 15VA, IP44	33907