

LUMIUS

The Lumius series is a state-of-the-art product for demanding applications in various environments. Light fixtures within the Lumius series can be fitted with narrow to wide beam optics, making them suitable for a variety of applications from machine tools to work benches and vehicles.

The Lumius series has the latest LED technology with high performance in both intensity and quality of light pattern, as well as, a high color rendering index of over 90. The color temperature is 4300K which is suitable for demanding tasks. It features low energy consumption and long service life with high vibration durability and virtually no radiated heat from the light beam.

The lamp head is made of aluminum which allows for good heat dissipation and good protection against external impact.

The Lumius series has a flexible gooseneck arm and is available in various lengths. It can be supplied with an external plug-in transformer 230V (with a protection class of IP44).

Lumius series IP65 is specifically developed for harsh industrial environments and applications where dust and moisture resistance is vital. Typical applications include grinders, lathes, and drilling machines. The product is also suitable for outdoor use.

Lumius series DIM is specifically developed for chart board lighting on ships and other vessels. It can be used in a number of other applications where variable light intensity is necessary. Typical applications are ship bridges and visual inspection of components.

Customized versions are available upon request.

Features Include

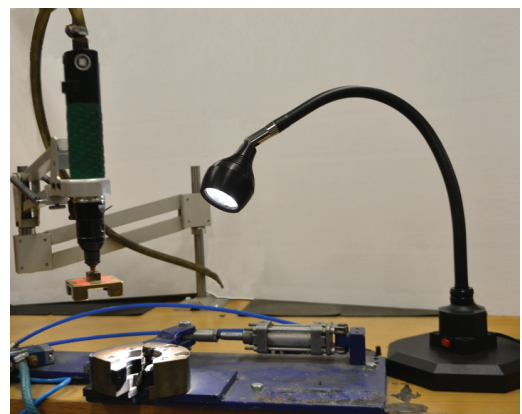
Arm length 20 or 27 inches with or without swivel joint, spotlight
LED service life >75,000 hours
IP20/IP65
Dimmable almost to zero (it will always start at the lowest intensity)
12-36VCD
AC/DC adaptor 100-240/12V, IP available as accessory

Applications

Heavy industrial applications
Vehicles
Military and marine applications, red lens available as accessory

Benefits

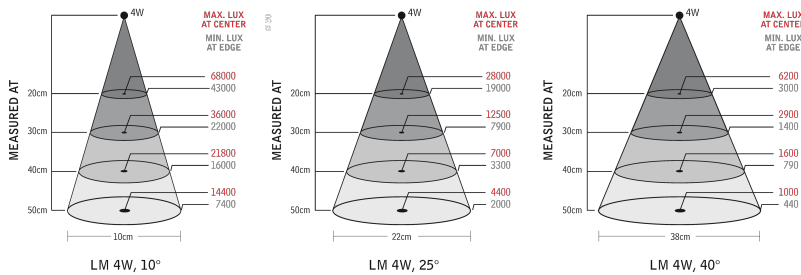
Long service life
High quality components
High quality light pattern
High color rendering
Rugged flexible arm
Durable design



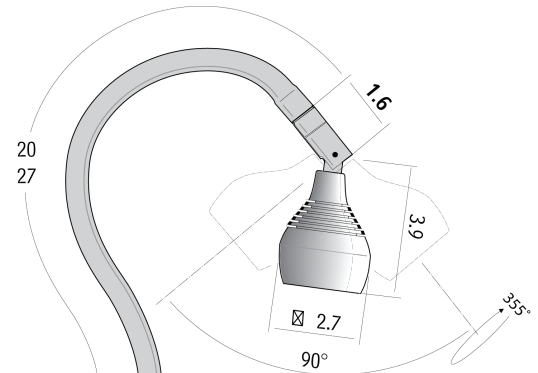


Technical Specifications

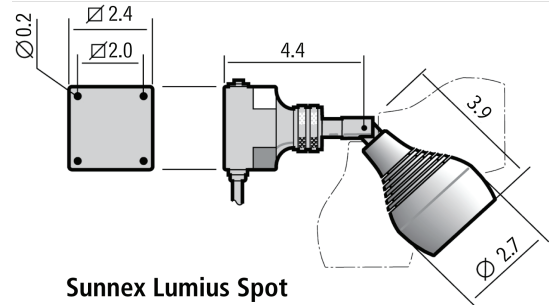
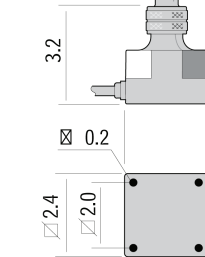
Input	12-36VDC, 6-foot cordset (100-240VAC plug-in AC/DC adaptor available)
Power consumption	4W
Arm length	1.5, 20, or 27 inches
Color	Black
Color temperature	4300K
Protection class	Class III
Beam angle	10° standard or 25° and 40° coming soon)
Light output	260Lm, 14400Lx at 20 inches, 10°
Color rendering index	93
Lifespan	>75,000 hours



Model	Arm	Details	Part Number
Lumius Spot	1.5"	Low Voltage	LUM-00D-L
Lumius Spot	1.5"	High Voltage	LUM-00D-H
Lumius Flex	20"	Swivel Joint/Low Voltage	LUM-20D-SJ
Lumius Flex	20"	Swivel Joint/High Voltage	LUM-20D-SJH
Lumius Flex	20"	IP65/Low Voltage	LUM-20D
Lumius Flex	20"	IP65/High Voltage	LUM-20DH
Lumius Flex	27"	Swivel Joint/Low Voltage	LUM-27D-SJ
Lumius Flex	27"	Swivel Joint/High Voltage	LUM-27D-SJH
Lumius Flex	27"	IP65/Low Voltage	LUM-27D
Lumius Flex	27"	IP65/High Voltage	LUM-27DH



Sunnex Lumius
Gooseneck Arm



Sunnex Lumius Spot

Mounting Accessories



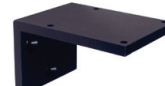
Magnetic base



Table base



C-Clamp



Wall mount

More info about
Accessories
see separate leaflet
sunnexonline.com

Sunnex reserves the right to change this information without further notice and holds no liability for printing errors in this content.

Copyright © Sunnex, Inc. All Rights Reserved.



Sunnex, Inc. North American Headquarters • 8001 Tower Point Drive • Charlotte, NC 28227
Tel: 1-800-445-7869 • Web: www.SunnexLights.com • E-mail: info@sunnex.com