



LUXOR - Spotlight LED

Sunnex Luxor is a LED-lamp with exceptional intensity for machine applications, where the lamp head is placed at a distance from the lit surface.

The lamp head is made from durable aluminum for challenging environments. The classic Sunnex flexible arm and Spot version can be chosen or the articulated arm system, for superior reach.

This light contains a wattage of 12W with a suitable distance between the lamp head and surface of 30in (75cm) to 79in (200cm). The light contains a narrow beam of 8° (the distance can be increased to 138in (350cm)). The supply voltage for safe use is 24VDC (ex: an industrial environment). An adapter for connection to the power net is available as an accessory.

IP20 and IP65 versions are available options.

Suitable applications are larger machines, CNC-Centres and other applications where very high intensity is needed.

If spot or flexible arm is chosen our accessories like C-clamp, wall bracket, magnetic base and table base can be used with this product. 100-230V adaptor is also an accessory.

Custom versions available upon request.

Features

- Flexible arm, articulated arm system AAS or Spot-version
- Long technical life > 50,000 hours
- 24VDC supply voltage for safe use in harsh environments
- High intensity for use at greater distance
- Adaptor available for direct connection to high voltage
- Other applications where high intensity is required

Applications

- Machines
- CNC-Centres
- Large presses

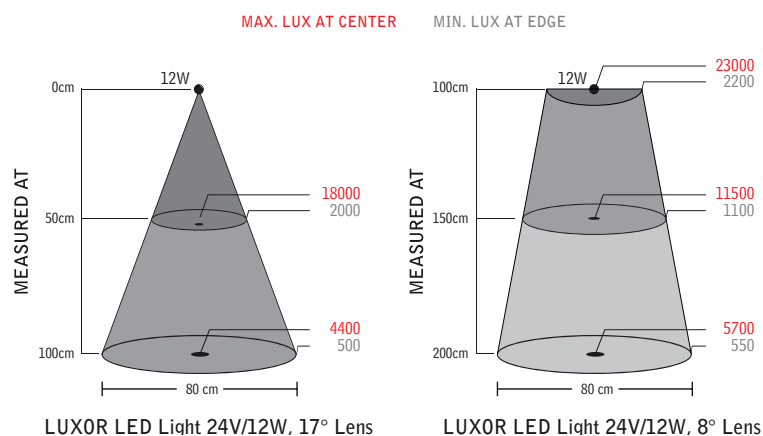
Benefits

- Low power consumption
- Very low heat emission
- Very high intensity & luminous output
- Flexible arm for precise adjustment
- Articulated arm system for superior reach



Technical Specifications

Supply voltage	24-36V AC/DC 2m cord set 100-240VAC Plugin AC/DC-Adaptor available as an accessory, IP44
Power consumption	12W
Arm length	20in (500mm) flexible arm, 39in (1000mm) or 49in (1250mm) rigid arm
Color	Black
Color temperature	4300K
IP rating	IP20/IP65
Protection class	III
Beam Angle	17 Deg Std, 8 Deg. Opt.
Light output	900Lm, 4400 Lx 17° std, 23000 Lx with optional 8° at 39in (100cm) distance
Color rendering index	CRI: 39" (100cm)
Life span	> 50.000h

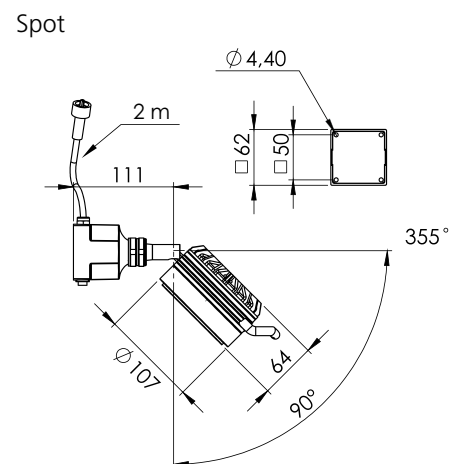
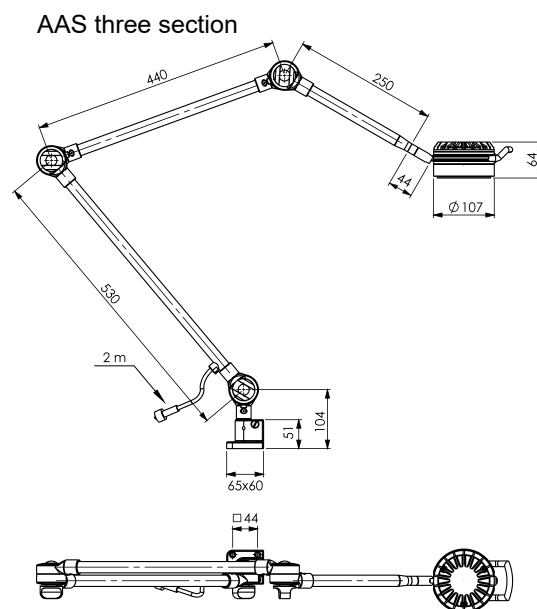


PART #	ARM LENGTH	CONNECTION	OTHER
LUX-20-IP65	500 mm flex	24-36V AC/DC	IP65
LUX-20-SJ	500 mm flex	24-36V AC/DC	Joint/IP20
LUX-00	Spot	24-36V AC/DC	IP20
LUX-39HD	AAS two section	24-36V AC/DC	IP65
LUX-49HD	AAS three section	24-36V AC/DC	IP65

PLUG-IN POWER ADAPTERS

US - TRF L9311 24V EU - TRF L9304 24V UK - TRF L9305 24V AU - TRF L9308 24V

*Additional Plug In Adaptors available based on country of origin.



LUXOR Series LED



Accessories



PLUG-IN ADAPTER
US - TRF L9311 24V



MAGNETIC MOUNT
ACC 27711L



TABLE MOUNT
ACC 27718



L-BRACKET
ACC 27715



C-CLAMP
ACC 27712